



Operating and Maintenance Manual





Dear Thermostar Customer,

congratulations on your purchase of a new Thermostar Dry Steam Cleaner.

This unique cleaning system is exclusively available from selected authorized dealers. It allows you to not only clean your home faster, more efficiently and more cost-effectively, but also protects your valuable furniture as well as other interior items since there is no need to use any chemicals.

This user's guide illustrates how to use your Thermostar Dry Steam Cleaner correctly and in the most efficient way in a few easy steps.

Allow yourself to be surprised how effective and efficient your new Thermostar operates and soon it will become an integral part of your household.

Please take a few moments and read this user's guide before you operate the machine. Please also note the included safety instructions!

We hope you enjoy your new Thermostar!

Products for Life

We sometimes think that we own nature – the truth is that we are only part of nature. The way we treat nature directly affects our children! We at Thermostar believe that waste should be prevented whenever possible. With this cleaning system we have found a solution that is ecologically practical and makes good economic sense. Products for life are only purchased once and disposed once.

The Thermostar dry steam system is available exclusively from selected authorized dealers. It offers outstanding quality standards as well as extraordinary guarantees – it just doesn't compare to any other commercially available product.

Introduction





What is dry steam?

Commonly available steam cleaners generally operate with low pressure (app. 3 to 4 bar) and low steam temperatures. This creates a very wet steam with low cleaning capacity, which can be harmful to wood surfaces. This is the main reason why many of those appliances are rarely used and will finally end up in the basement. Many manufacturers therefore offer steam vacuum cleaners that suction excessive moisture directly during the cleaning process. This results in the appliances being larger and their hoses being thicker and heavier. Numerous market analyses show that household appliances will only be used on a regular basis if they are light, small and convenient. Furthermore, these appliances will only function properly when the steam is not too hot and/or wet – which is contrary to one of the basic rules for effective steam cleaning: Because less heat equals less cleaning performance.

The terms dry steam, micro steam or heat cleaning are used in describing appliances that operate with high tem-

peratures and pressures (beginning at app. 160° C and app. 6 bar pressure).

Larger heating elements and comprehensive safety features are generally necessary in order to generate more heat and pressure. This results in the appliances to be larger and rather inconvenient to handle. Thanks to the unusually high capacity of the AKU-THERM-COMPACT heating system used in the Thermostar it is possible even in relatively small boilers to generate a rather high working pressure of up to 8 bar. The result is an amazing high-capacity appliance with a practical size that fits every household.

The major advantage of cleaning with dry steam is that fabrics and other material do not become wet but rather slightly damp. The high temperature and speed at which the steam is discharged removes dirt and dust from its carriers.

The high steam temperature has therefore a "releasing" effect. The hot steam.



Safety regulations

- ★ The manufacturer is not liable for damages arising from improper or incorrect use.
- ★ Do not direct the steam or hot water jet toward persons or animals. Do not touch the steam or hot water jet – danger of severe burns!
- ★ The Thermostar is equipped with a pressure meter, which allows you to regulate the pressure and maintain a preset level (see “rated pressure” listed on the technical specifications label attached to the appliance). If steam should ever exit from the bottom section of the appliance, the appliance may not be functioning properly and the safety valve is limiting the pressure within the boiler. In this case we strongly recommend that you stop using the appliance, immediately disconnect the power supply and contact the customer service department.
- ★ Do not use the appliance if the power cord or other major components such as safety devices, high-pressure hoses or the handle/pistol grip are damaged.
- ★ The Thermostar Dry Steam Cleaner is equipped with a “solids discharge” warning system. If “CALC” is displayed on the multi-function display, it is time to clean the boiler (see “Maintenance”). Remove the discharge cover only if the appliance has been turned off and the power cord has been disconnected for a minimum of 5 hours.
- ★ This appliance is not intended to be used by persons (including children) with limited physical, sensory or mental aptitude or lack of experience and/or knowledge unless they are supervised by a person responsible for their safety or have received instruction from this person as to how Thermostar is used. Children should be supervised to ensure they are not playing with the appliance.
- ★ High-pressure hoses, accessories and connections are necessary to safely operate the appliance. Only use those hoses, accessories and connections recommended by the manufacturer.
- ★ **CAUTION:** Before using brushes, you should always try them first in an inconspicuous area to avoid damaging any surfaces. The steam generated by the steam generator is very hot. You should therefore always conduct a test on a small surface area. Wood surfaces and silicone joints should only be treated with a minimum amount of steam and then immediately dried using a micro-fibre cloth.
- ★ When using an extension cord, the connector plugs as well as the receptacles must be completely waterproof. Incorrect extension cords can be hazardous.
- ★ Never leave the optional iron unattended once it is connected to the power supply.
- ★ Any alteration to the appliance releases the manufacturer from all claims and liabilities.
- ★ The data for hand-arm vibration with respect to this appliance is less than 2.5 m/s² and is therefore not specified.





Table of content

Introduction	2	Operating hours counter	9
What is dry steam?	3	Pressure gauge	9
Safety regulations	4	Operating instructions	10
Component index	6	Using Thermostar micro steam ...	12
Keypad functions	8	Iron (optional)	16
Steam generator maintenance ...	9	Steam mop (optional)	16

Technical Data

Look at the technical badge on the machine.

Features

- ★ Stainless steel boiler (10-year warranty!)
- ★ Integrated fan to keep the electronic cool
- ★ Self-decalcifying heating element (expansion during heating process causes calcium deposits to fall off). The capacity of these elements is four times greater than equivalent spiral heating elements (28 instead of normally 7 W/cm²). They offer very long service life and – contrary to most spiral heating elements – can be replaced.
- ★ Self-decalcifying electromechanical float (with TrueTemp Technology for constantly high steam temperature)
- ★ 24 x 7: Constant steam– 2 tank systems allow continuous operation



PLEASE READ THESE OPERATING INSTRUCTIONS BEFORE USING THIS APPLIANCE. PLEASE KEEP THEM IN A SAFE PLACE SO THAT YOU MAY REFER TO THEM LATER AND PROVIDE THEM TO ANY SUBSEQUENT OWNERS.

IT IS ESSENTIAL THAT YOU CAREFULLY READ AND FAMILIARIZE YOURSELF WITH ALL SAFETY REQUIREMENTS BEFORE USING THE APPLIANCE FOR THE FIRST TIME. NOTIFY YOUR AUTHORIZED DEALER IMMEDIATELY IF YOU NOTICE THAT THE APPLIANCE WAS DAMAGED DURING SHIPPING.

Interpretation of the symbols



CAUTION!
STEAM ...
Risk of injury



Please read the instructions



CAUTION!



Manual;
Instruction for use

Environmental protection



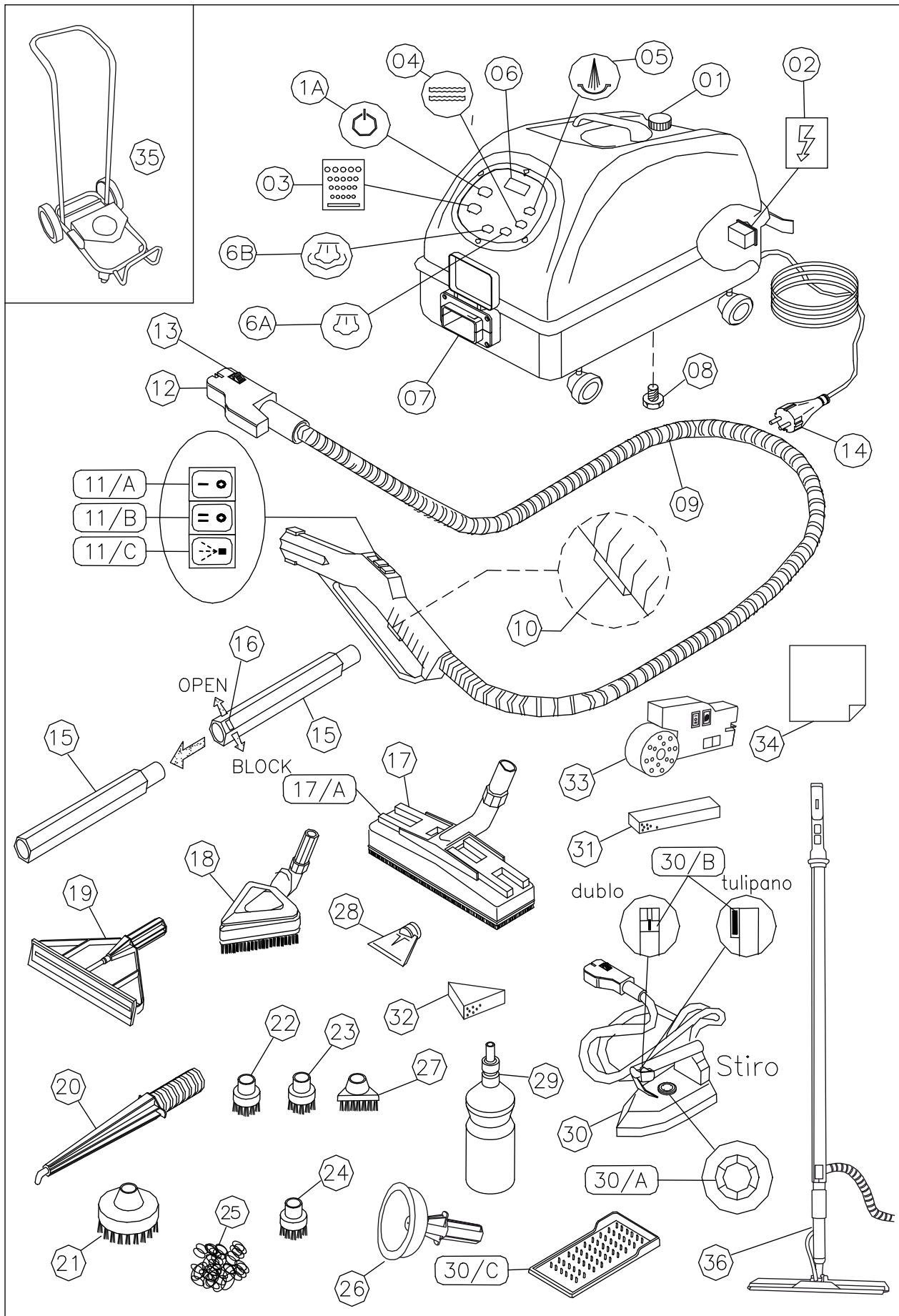
All packaging materials can be reused. The packaging should not be treated as household waste but instead be taken to respective collection sites.



Please remember that the appliance contains precious materials that should be recycled and taken to respective collection sites when necessary. Electric and electronic appliances, batteries, oil and similar substances may not be disposed in the environment. Please separate all waste.



Substances such as motor oil, heating oil, gasoline or diesel fuel may not be disposed in the natural environment. Please protect the soil and dispose used oil according to the environmental regulations.





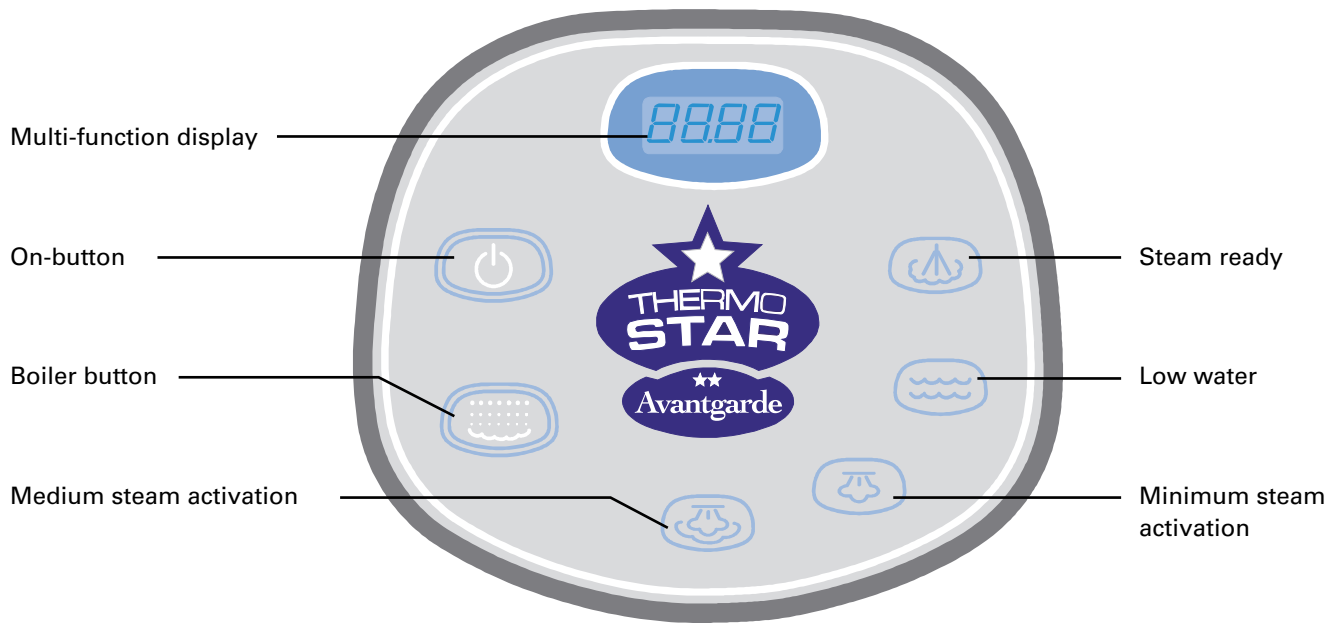
Component index*

- 1) Lid for cold-water reservoir
- 1A) Stand-By switch
- 2) Main switch
- 3) Boiler switch
- 4) "Low water" indicator light
- 5) "Steam ready" indicator light
- 6) Digital thermometer and hour counter
- 6A) "Minimum steam" indicator light
- 6B) "Medium steam" indicator light
- 7) Power outlet for accessories
- 8) Discharge cover (drain)
- 9) Handle/Pistol grip with steam hose
- 10) Steam button
- 11A) Minimum Steam button
- 11B) Medium Steam button
- 11C) Hot water button (press simultaneously with steam button "10")
- 12) Steam connector plug
- 13) Securing button for steam connector plug
- 14) Power cord and plug
- 15) Extension pipe
- 16) Locking button
- 17) Rectangular brush
- 17A) Attachment clip for micro-fibre cloths
- 18) Large triangular brush
- 19) Window cleaner (optional) 19
- 20) Steam nozzle
- 21) Brass brush (Ø 60mm) or nylon brush (Ø 60mm, optional)
- 22) Nylon brush (Ø 28mm)
- 23) Brass brush (Ø 28mm)
- 24) Stainless steel brush (Ø 28mm) (optional)
- 25) Stainless steel wool (optional)
- 26) Drain cap
- 27) Triangular brush (optional)
- 28) Steam scraper
- 29) Refill bottle (optional)
- 30) Iron (optional)
- 30A) Thermostat
- 30B) Steam button
- 30C) Rubber mat (optional)
- 31) Rectangular steam puffer (optional)
- 32) Triangular steam puffer (optional)
- 33) Evaporator (optional)
- 34) Micro-fibre cloths (optional)
- 35) Stainless steel trolley (optional)
- 36) Steam mop (optional)

* Accessories included with Thermostar may vary for different countries (except for Germany).



Keypad functions




The two keys located on the front keypad as well as the main switch located at the back of the appliance are used to control different operating modes:

The keys are designated as follows:

1A) Appliance on-switch  hereinafter only 1A

3) Boiler on-switch  hereinafter only 3

2) Main power switch  hereinafter only 2





Steam generator maintenance

Removal of calcium deposits within the boiler

CAUTION: WE STRONGLY RECOMMEND THAT YOU CLEAN THE BOILER ONLY AFTER THE APPLIANCE HAS COOLED DOWN, PARTICULARLY AFTER IT HAS BEEN TURNED OFF FOR A MINIMUM OF 5 HOURS AND THE POWER CORD HAS BEEN DISCONNECTED.

The TrueTemp Technology makes it possible to use distilled or osmosis water in your Thermostar (contrary to many other commonly available steam cleaning systems). It is therefore not necessary to decalcify the appliance. If you use calcium-free water and the maintenance display indicates "CALC" it is okay to just turn the display off (see *1).

The appliance is equipped with a maintenance alert system that is activated when the "CALC" is displayed alternating with the temperature. You can still complete your cleaning chores when these letters are displayed. Then disconnect the appliance from the power source and allow it to cool off for at least five hours. Follow the aforementioned steps to ensure that no steam or pressure is present in the boiler interior.

1. Fill water reservoir (1) with water.
2. Either place a suitable small tub underneath the appliance or position it on top of the kitchen sink and remove the discharge cover (8) from the appliance bottom.
3. Turn on the appliance by activating the main switch (2) and the Stand-By switch (1A) (**the boiler switch (3) must be in the off position**) and allow the pump to run for app. 2 to 3 minutes until all water has drained. Shake the machine a little in order to completely remove all calcium deposits.

The boiler switch / heater (3) must remain off during the entire decalcification process. Do not turn the machine upside down or calcium may enter into the valves!

If you are using water with high calcium content it is recommended to refill the machine with water again and repeat the aforementioned steps.

4. Replace the drain cover (8) and refill

the machine with water (1).

5. Turn on the main switch (2) and the Stand-By switch (1A) and **wait approximately two minutes before activating the boiler switch (3)**. The machine will initially pump water into the boiler for app. 2 minutes (you will hear the pump working). **Only then you may turn on the boiler switch (3).**
6. It is recommended that you turn on the steam button (11A) located on the handle (activate safety switch (10 simultaneously) in order to release the air from the empty boiler.

*1 Reset the maintenance intervals CALC

Turn on the machine by activating both button (2) and (1A), then press and hold button (1A) for app. 10 seconds. "CALC" will no longer be displayed until the next time maintenance is needed.

Hour counter

This machine is equipped with 2 hour counters.
In order to read the elapsed hours you

must first turn off the machine using button (1A) and then activate button (3). Pressing this button will

alternatively show the elapsed hours for counter 1 and/or 2.

Pressure gauge

Keep button (3) depressed while the machine is turned on. After a few seconds the display will show the

pressure (in bar) currently present inside the boiler. The value remains visible on the display for app. 10

seconds before the temperature is again shown in °C.



Operating i

1.



Before using your Thermostar, please ensure that there is no visible damage to the appliance. Verify that the volt and ampere ratings for your power source match those listed on the appliance sticker.

2.



Remove the reservoir lid (1) from the appliance and fill the reservoir with at least 1 litre water. You may use straight tap water, distilled or osmosis water. Please don't fill any type of chemicals into your Thermostar.

3.



Connect the power cord (14) to an outlet.

4.



Connect the steam connector plug (12) to the designated appliance accessory outlet. Press firmly until you hear the locking button (13) click.



Instructions

Press main switch (2) located at the front of the appliance, button (1A) and the boiler switch (3) and wait for app. 5 minutes until the indicator light (5) is illuminated. It indicates that the boiler has steam. Both switches (11A and 11B) located on the handle should be turned off.



5.

When the indicator light (5) is illuminated you can adjust the desired steam volume (steam switch 11A and 11B) as follows:

- a. 11A = Minimum steam
- b. 11B = Medium steam
- c. 11A + 11B = Maximum steam

Activate the steam switch (10) to release steam. The status is displayed on the control panel (indicator lights (6A) and (6B)).



6.

Using switch (11C) allows you to add hot water to the steam. **Activate the switch only in short intervals (a few seconds)** to avoid discharging the generator. The switch (11C) will only function if the boiler switch (3) was also activated.



7.

CAUTION

THE RED INDICATOR LIGHT "LOW WATER" (4) WILL LIGHT UP IF THE WATER FROM THE RESERVOIR IS DEPLETED. THIS WILL BE FOLLOWED BY A RECURRING AUDIBLE ALERT. THE POWER SUPPLY FOR THE HEATING ELEMENT WILL BE INTERRUPTED UNTIL THE WATER RESERVOIR (1) IS AGAIN FILLED. **THERE IS NO NEED TO TURN THE MACHINE OFF TO DO THIS.**



Using Thermostar micro steam

General tips:

- ★ The cleaning temperature remains equally high regardless of whether you use the machine with minimum or maximum steam. We therefore recommend that you perform the majority of your cleaning using the minimum steam setting. Moving the tip of the steam nozzle closer to the surface that is to be cleaned will increase the cleaning efficiency. Maximum steam is only necessary where additional pressure is needed to remove the dirt, for example in hard-to-reach places (i.e. heating radiators) and all areas that require more moisture to clean, such as carpets and upholstery (more steam = more moisture).
- ★ When using triangular (18) or rectangular brushes (17) with attached micro-fibre cloth, you should insert a steam puffer (31, 32) between the brush and the cloth to expand the cleaning area and thus achieve the optimum effect.
- ★ When cleaning wood floors, laminates or other wood surfaces we recommend that you use only little steam/moisture. In this case you should work the same area for just a short period and apply steam only occasionally. The same applies to all surfaces with silicone.
- ★ When cleaning marble and stone we recommend nylon brushes and triangular or rectangular brushes with attached micro-fibre cloth. Brass brushes could damage and/or discolour the object to be cleaned.
- ★ Carpets and sofas should be thoroughly vacuumed before steam cleaning.
- ★ Never use steam to clean untreated wood.
- ★ It may be necessary to change the micro-fibre cloths several times depending on how dirty the carpets, upholstery or floors are.





Application	Accessory and description		Level
Thawing/Defrosting	Attach the steam nozzle (20) with the steam scraper (28)		Maximum steam
Drain cleaning	First fill the drain with a little and place drain cap (26) over the drain. Close all overflow openings and flush the drain with hot water (11C) using short intervals.		Hot water
Cleaning fixtures and removing calcium	Use steam nozzle (20) and (if necessary) the round nylon brush (22) with stainless steel wool (25). For larger calcium deposits add small amount of decalcifier (vinegar or citric acid).		Minimum to maximum steam
Exterior car cleaning	Many contaminants remain on the car even after using a commercial carwash, i.e. insects on the windshield or car body, brake dust on wheels. Using the steam nozzle (20) you can spot-clean these contaminants directly. Wipe with a micro-fibre cloth to finish.		Minimum to maximum steam
Interior car cleaning (Fabric and leather)	For normal contaminations use the triangular brush and clean the surface areas with an inserted cloth – you may use old towels for simple materials while we recommend using micro-fibre cloths for leather and Alcantara.		Maximum steam for cloth seats Minimum steam for leather and Alcantara
Kitchen oven	Use the round nylon brush (21) with stainless steel wool (25). To remove stubborn stains move the brush back and forth while applying pressure to the particular spot until the stain is resolved by the heat.		Minimum steam
Vent hood	Use the steam nozzle (20) for cleaning the grease filter. Blow filter out using maximum steam. Use the steam nozzle for the vent hood and wipe clean with the micro-fibre cloth. Depending on the surface material you may also clean the corners with the round nylon brush (22).		Minimum to maximum steam
Shower stall and wall tiles	In case of heavy calcium deposits on glass doors and wall tiles we recommend an initial application of vinegar or citric acid. Allow to penetrate for 20 minutes. Then continue to clean surfaces with steam nozzle (20) and micro-fibre cloth (34) or triangular brush (18) with inserted micro-fibre cloth (34). You can clean any joints and grooves using the round nylon or brass brush (22/23). To remove stubborn stains you can also use the round nylon brush (21) with stainless steel wool (25) immediately on the glass.		Minimum to maximum steam
Bicycles and motorcycles	Clean with steam nozzle (20) and finish with micro-fibre cloth (34).		Hot water, minimum to maximum steam



Application	Accessory and description		Level
Window frames and shutters	Use either the steam nozzle (20) (finish with micro-fibre cloth (34)) or the triangular brush (18) with inserted cloth for cleaning. CAUTION: Apply only slight amount of moisture/steam on wood frames. Keep steam nozzle at safe distance from wood.		Minimum steam
Removing stains from fabrics and carpet	Place steam nozzle (20) directly above stain and move quickly back and forth. Wipe clean using micro-fibre cloth (34). CAUTION: Ensure that the material is suitable for steam prior to cleaning. This type of treatment may be damaging to the structure of carpets, particularly wool carpets.		Minimum steamf
Tiles and PVC	Use the triangular brush or rectangular brush (17, 18) with inserted micro-fibre cloth (34).		Minimum steam
Joints	Use the round brass or nylon brushes (22/23) together with the extension pipes (15) to relax your back during work. Move slowly with the direction of the joint while applying little pressure. This allows you apply more heat with less force required. Your brushes will also last longer!		Minimum steam
Garden furniture Plastic and rattan	Use the triangular brush (18) with inserted cloth; for stubborn dirt also use the small or large round nylon brush (21, 22). For plastic furniture place a micro-fibre cloth between the brush and the surface to be cleaned to prevent damaging it.		Minimum steam
Glass cleaning	Resolve dirt with steam nozzle (20) and wipe clean with micro-fibre cloth (34). Since the steam contains neither calcium nor cleaning agents you will be able to deep-clean windows and other glass surfaces free of streaks and watermarks.		Minimum steam
Polished wood surfaces	Great care must be used when cleaning polished wood; never apply pressure during treatment. Terry towels work best. Micro-fibre clothes are not appropriate since they clean too thoroughly and would thus remove the polish.)		Minimum steam
Wood furniture	Apply small amount of steam from further away using the steam nozzle (20) and immediately wipe clean with micro-fibre cloth (34). Although this process will take a little longer it is much gentler.		Minimum steam Not to long at one place
Heating radiators	Use the steam nozzle (20) to clean the radiators from the top down. The dust will cohere and can then be wiped off at the bottom.		Maximum steam
Kitchen grease on cook tops and various metal surfaces	Depending on the sensitivity of the surface to be treated, we recommend cleaning with the steam nozzle (20), small round brass brush (23) and/or large round brush (21) with stainless steel wool.		Maximum steam



Application	Accessory and description	Level
Venetian blinds	Venetian blinds are delicate. Clean using short puffs of steam and wipe clean with micro-fibre cloth (34).	Minimum steam
Cork (sealed)	Only sealed cork floors may be treated with steam (do not treat oiled or waxed cork floors!). Clean with rectangular brush (17) and inserted micro-fibre cloth (34).	Minimum steam
Laminates and parquet	Clean with rectangular brush (17) and inserted micro-fibre cloth (34) – use only little moisture (activate steam button (10) only occasionally). If used properly steam will not damage parquet and laminates. (In comparison: A stay in sauna at 90 °C is no problem while a bath at this temperature is impossible.) Micro-steam is also gentler on areas to be cleaned than is wet cleaning or using commonly available steam cleaners!	Minimum steam
Leather	Use the triangular brush or rectangular brush (17, 18) with inserted micro-fibre cloth (34). Activate the steam button (10) only occasionally (do not hold down continuously). Old or brittle leather should not be cleaned. Apply leather conditioner after cleaning.	Minimum steam
Mattresses, upholstery, carpets	Use the triangular or rectangular brush (17, 18) with inserted micro-fibre cloth (34). Always test in an inconspicuous area to verify that the material is colourfast. For sensitive material use the steam nozzle (20) to apply steam from a 10 cm distance and then wipe the surface with a micro-fibre cloth (34).	Maximum steam
Plants	Apply short puffs of steam from 40 to 50 cm away using the steam nozzle (20). From this distance the steam is no longer hot but comfortably cool.	Maximum steam
Bathrooms and sanitary equipment	Large areas can be cleaned using the triangular or rectangular brush (17, 18) together with the inserted micro-fibre cloth (34); use the steam nozzle (20) either with or without brushes (22) for hard to reach areas.	Minimum to maximum steam
Watch bands and jewellery	Place jewelry or watch bands on a micro-fibre cloth (34) and apply the steam nozzle (20) directly to clean and polish. CAUTION: Never apply steam directly to the watch case – apply only to the watch band.	Minimum steam
Animal cages, metal grates and other hard to reach places	Simply clean with steam nozzle (20) and wipe clean with micro-fibre cloth (34).	Minimum to maximum steam
Toilet	Cleaning without the use of chemicals! The hot water function (11C) is just right for cleaning the inner edges of the toilet. Simply apply steam from up close using the steam nozzle (20) and finish by wiping dry.	Hot water



Iron (optional)

The iron (30) is connected to the Thermostar using the connector cable.

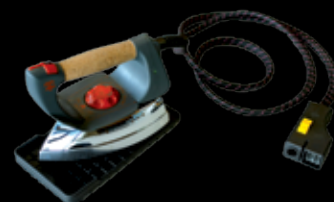
Use the Thermostat (30A) to adjust the temperature of the iron that is appropriate for the materials being ironed.

Wait until both appliances have reached the correct operating temperature before activating the steam button (30B).

The soleplate of our iron is made from pure aluminium. Since there is a

chance that it may oxidize, we recommend using a Teflon sole (30D) which is appropriate for ironing all types of materials. **Always place the iron on the designated rubber mat (30C) whenever you have finished ironing or you are not using the iron for a while.**

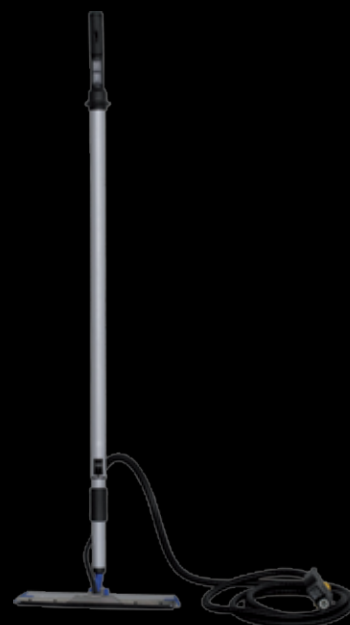
The steam entering the iron does not contain any calcium. It is therefore not necessary to decalcify the iron.



Steam mop (optional)

The steam mop is perfect for cleaning large areas, regardless of whether this involves floors or walls (vertical areas). It is light and extremely easy to handle. It is equipped with a 5 m long

hose (10 m optional), a telescopic pipe and 40 cm cloths made of cotton or polyester and/or micro-fibre (optional). The steam adjustment (min-med-max) is located directly on the handle.



Thermostar Handels GmbH

Auen-Süduferstraße 67
9220 Velden
Office: +43 (0) 4274 2821
Fax: +43 (0) 4274 2821 4

UID: ATU65046906
FN329029t

www.thermostar.info
info@thermostar.info

